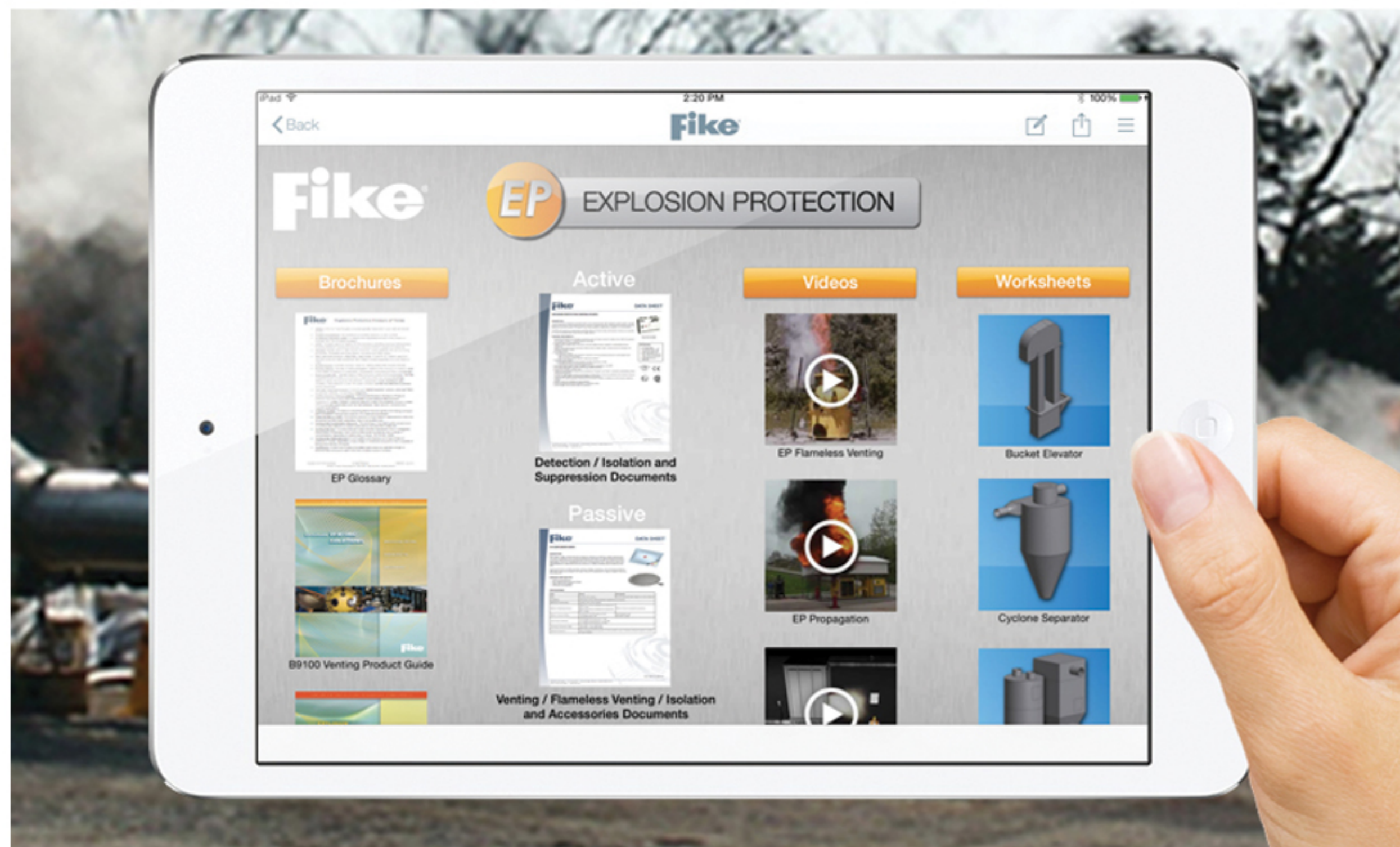


# What Is It?

An enterprise app platform used by companies to build a branded app for employees, partners and customers.

It enables mobile data-collection processes resulting in shortened cycle-times and increased process efficiencies with the ability to quickly share, collaborate and report on the collected data.



"We use this to showcase our products and services while our reps are out in the field... plus the custom spec data we collect at our customer sites goes directly back to our engineering team in real-time."

- Sales & Marketing VP

Besides reducing form-based paper processes with the intent of "going green," the real value of using inBound™ is the quick, custom application set-up, with little to no development time / cost wasted.

# What's Included?



App platform to grow process forms over time



Private, secure "cloud" for managing content / data



User management and access to who sees what



Off-line mode when connection unavailable



Embedded design tool with 25+ unique objects (optional)



Dashboard data reporting and sync w/ CRM or ERP (optional)



1-on-1 dedicated consulting support (optional)



Tiered user licenses for enterprise use.

# Request A Demo

<http://www.inboundforms.com/enterprise>



**inbound**<sup>TM</sup>  
data that moves you

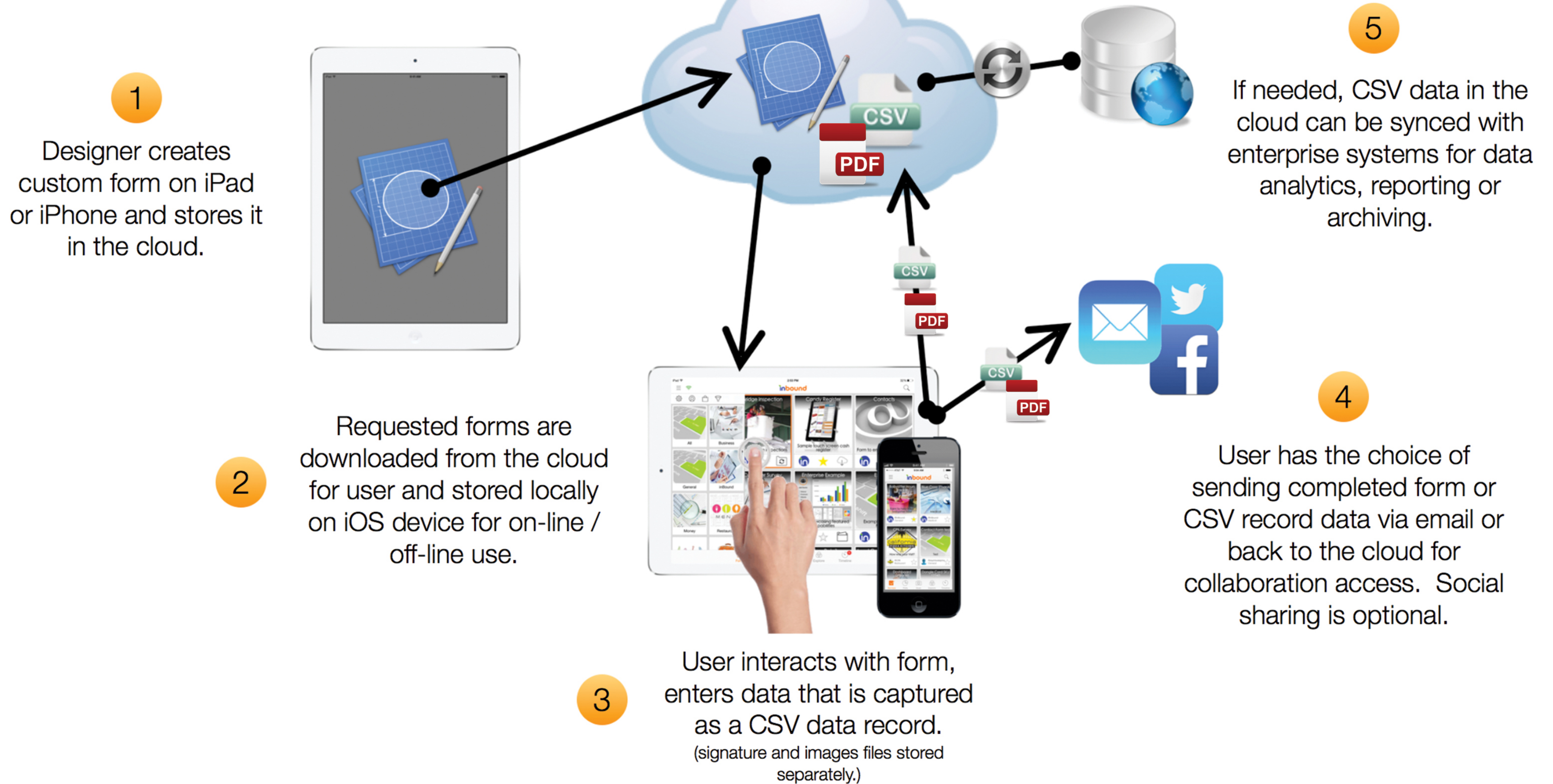
Copyright © 2015. Abbacore LLC. All rights reserved.

**inbound**<sup>TM</sup>  
data that moves you

your enterprise app  
...our platform



# How Does It Work?



## Sample Cases

Designed to be cross-industry, here are a few examples of how businesses are using inBound™ for enterprise processes and data.



Construction: on-site job reporting, etc.



Medical: on-site flu shot / health screenings